

STUDY PROTOCOL

Open Access

# The COMmunity of Practice And Safety Support (COMPASS) total worker health™ study among home care workers: study protocol for a randomized controlled trial

Ryan Olson<sup>1,2,3</sup>, Diane Elliot<sup>4\*</sup>, Jennifer Hess<sup>5</sup>, Sharon Thompson<sup>1</sup>, Kristy Luther<sup>1</sup>, Brad Wipfli<sup>1</sup>, Robert Wright<sup>6</sup> and Annie Mancini Buckmaster<sup>1</sup>

## Abstract

**Background:** Home care workers are a high-risk group for injury and illness. Their unique work structure presents challenges to delivering a program to enhance their health and safety. No randomized controlled trials have assessed the impact of a Total Worker Health™ program designed for their needs.

**Methods/design:** The COMPASS (COMmunity of Practice And Safety Support) study is a cluster randomized trial being implemented among Oregon's unionized home care workers. Partnering with the Oregon Home Care Commission allowed recruiting 10 pairs of home care worker groups with 8 participants per group (n = 160) for balanced randomization of groups to intervention and control conditions. Physiologic and survey evaluation of all participants will be at enrollment, 6 months and 12 months. Primary outcomes are to increase health promoting (for example, healthy nutrition and regular physical activity) and health protecting (that is, safety) behaviors. In addition to assessing outcomes adjusted for the hierarchical design, mediation analyses will be used to deconstruct and confirm the program's theoretical underpinnings and intervention processes. Intervention groups will participate in a series of monthly 2-hour meetings designed as ritualized, scripted peer-led sessions to increase knowledge, practice skills and build support for healthy actions. Self-monitoring and individual and team level goals are included to augment change. Because generalizability, reach and achieving dissemination are priorities, following initial wave findings, a second wave of COMPASS groups will be recruited and enrolled with tailoring of the program to align with existing Home Care Commission educational offerings. Outcomes, process and mediation of those tailored groups will be compared with the original wave's findings.

**Discussion:** The COMPASS trial will assess a novel program to enhance the safety and health of a vulnerable, rapidly expanding group of isolated caregivers, whose critical work allows independent living of frail seniors and the disabled.

**Trial registration:** ClinicalTrials.gov identifier: NCT02113371, first registered 11 March 2014.

**Keywords:** Home care workers, Total worker health, Occupational safety, Health promotion, Ergonomics

\* Correspondence: [elliottd@ohsu.edu](mailto:elliottd@ohsu.edu)

<sup>4</sup>Division of Health Promotion & Sports Medicine, Oregon Health & Science University, 3181 SW Sam Jackson Park Road, L606, Portland, OR 97239-3098, USA

Full list of author information is available at the end of the article

## Background

The National Institute of Occupational Safety and Health (NIOSH) advocates Total Worker Health™ (TWH), which integrates occupational safety with health promotion as an effective and efficient means to achieve worker well-being [1,2]. Comprehensive TWH programs combine efforts to reduce job-related injuries and illnesses, while also promoting and protecting employee health. NIOSH has funded four TWH Centers ([www.cdc.gov/niosh/twh/centers.html](http://www.cdc.gov/niosh/twh/centers.html)), and this intervention protocol is a NIOSH-funded project of the Oregon Healthy Workforce Center of Excellence.

The project targets home care workers (HCWs), a vulnerable occupational group whose work structure presents unique challenges when designing a health protection and health promotion program. HCWs generally are low-wage, unskilled women who care for frail seniors and people with disabilities, by assisting with self-care activities (bathing, eating, personal hygiene, and transferring) and self-management tasks, such as housekeeping, meal preparation, and transportation. These critical services allow clients to remain in the community instead of needing institutionalized care. Although HCWs are the most rapidly expanding sector of the health care industry, with numbers expected to increase 50% by 2022 [3], their isolating work in private homes makes their two million members largely invisible.

HCWs are a group at high risk for occupational injuries [4]. They are without typical occupational safety support structures, such as safety committees, environmental cues for safe behaviors, and co-worker and supervisor assistance. They often lack basic protective equipment, such as gloves and aprons [5], and they frequently perform physically demanding tasks without co-worker assistance or equipment to reduce ergonomic exposures, resulting in high injury rates [6-10]. Health promotion is especially important, as the lower socioeconomic status of HCWs places them at increased risk for health problems [11], and some health problems, such as higher prevalence of obesity [12], also impact their injury rates [13].

As a group, HCWs are characterized as intrinsically caring individuals [14] and, although they often bond with clients and are appreciated by them and their families, those relationships also can be stressful; for example, clients may have progressive illnesses and be nearing the end of life. Moreover, an additional psychosocial challenge is the dual-relationships of clients being both the care recipient and “boss,” who can terminate employment. The boundaries of care can blur, with clients expecting or asking for services that are not on their approved care plan. That ambiguity may pressure HCWs to suppress their own emotions or perform tasks outside their roles to please their clients, again without the immediate support of co-workers or supervisors [15].

## Oregon’s unionized home care workers

Oregon is a leader in advancing the needs of HCWs. It was one of the first US states where HCWs unionized; a situation now present in almost a dozen states. Ability to collectively bargain led to basic benefits, such as health insurance, and establishment of an Oregon Home Care Commission and its registry to match HCWs with consumer employers [16]. Unlike HCWs employed by a private agency, this subset of unionized HCWs identifies potential consumer-employers through the registry and negotiates care plans with assistance of a case manager.

Although unionization secured collective bargaining and health insurance benefits, it did not result in a significant increase in pay, and it has not changed HCW demographics. To become a HCW, the Oregon Home Care Commission only requires being 18 years old, passing a criminal background check, completing an orientation, and providing references to consumer-employers. More than 17,000 HCWs, about two-thirds of whom are currently working, are listed with the registry, and approximately 1,100 Oregonians looking to hire help consult the website each month [17].

Oregon’s system of home care offers a unique opportunity to assess a HCW TWH program. The large number of independent contractors within a single system allowed forming HCW groups and randomizing those groups to condition. Working with private agencies would have been more difficult. Randomizing within agencies would mean potential diffusion to the control condition, as workers often cross-cover clients, and recruiting enough agencies, each with its own educational programs and resources, and to use that as a unit of randomization would have been more costly and generated a sample with greater heterogeneity across groups.

## Aims

Our overarching objective is to create a feasible, exportable TWH program for HCWs that provides knowledge, skills, and social support to enhance their safety and health. The intervention was titled the COMPASS (COMMUNITY OF Practice And Safety Support) Program. We hypothesized that the intervention group would demonstrate beneficial effects related to primary outcomes of health promotion (healthy nutrition, regular physical activity) and health protection (correcting hazards in homes and safety behaviors).

## Theoretical basis and intervention format rationale

Even the simplest intervention does not directly change behavior, but depends on altering intermediate or proximal mediating variables. Accordingly, the intervention process can be deconstructed into a conceptual theory that links those proximal variables to desired behavioral outcomes and an action theory that connects the intervention to those same proximal variables [18]. The conceptual aspect

is based on behavioral theories and empirical relationships among antecedent variables and intended outcomes. The action theory relates to how the intervention is structured to impact those proximal variables [19]. Our simplified action and conceptual model is shown in Figure 1.

### Conceptual theory

The conceptual underpinnings of COMPASS are based on social cognitive [20,21] and reinforcement theory [22], which emphasize a dynamic interaction among three domains: 1) the environmental; 2) an individual's internal determinants, such as personal motivation, beliefs, self-efficacy and outcome expectancies for different actions; and 3) an individual's behaviors, which for our purposes relate to health protection and promotion. Although not often mentioned, an individual's knowledge also relates to the change processes, as it is integral to perceived susceptibility, norms, and expectancies. While conventional thought is that knowledge alone does not change behavior, it may have an important permissive role, as interventions relying on social support are more effective when education is included. For example, in a meta-analysis of studies with unpaid family caregivers, those that combined education with social support produced the largest effects for improved well-being [23].

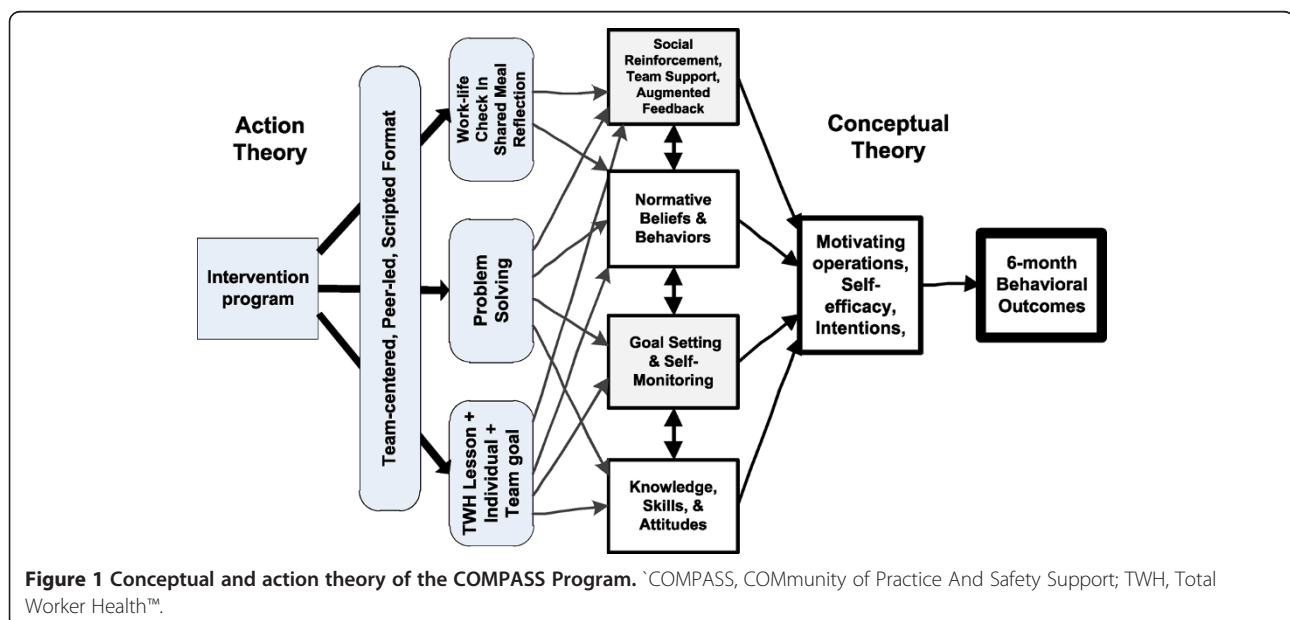
Given the isolation of home care work, our design also was informed by Bandura's elaborated Social Cognitive Theory of Self-Regulation [24]. In this theory, discrepancies between one's current behavior and a personal or social standard are motivating, and behaviors that reduce that gap are reinforcing and enhance self-efficacy [25].

### Action theory

The COMPASS intervention's action theory relates to building cohesive HCW groups as vehicles to affect knowledge, skills, norms, social support and self-monitoring related to TWH behaviors. Our objective was to create bonded teams that could function as "communities of practice". A community of practice is characterized by a social network of members who share work-related abilities and experiences and use their combined expertise to solve problems, provide support, and advance their profession [26-28]. Originally described for midwives, meat cutters, and tailors, the "community" is the structure that facilitates the interactions, and the "practice" is the shared knowledge and professional identity [28].

The intervention emphasizes goal setting and behavioral self-monitoring to identify discrepancies, a process shown to alter workplace safety behaviors [29]. This also fits well with Social Cognitive Theory's emphasis that monitoring progress towards objectives affects self-efficacy [24,30]. Finally, we also sought to integrate goal setting and self-monitoring processes at an individual and group level. Although individual goals and rewards are important, they lack a focus on shared accomplishments and group accountability. Therefore, we supplemented individual goals with group goals, where attainment required the majority of members reach an interdependent target [31]. Having these two levels (individual and group goals) operating simultaneously can be synergistic and augment productivity [32].

Individually recruited HCWs were assigned to a group, with intervention groups meeting serially over several months. The initial meeting is 4 hours, followed by a series of monthly 2-hour meetings. That timing and duration



were considered most feasible based on conversations with HCWs during preliminary study of their work activities [7,8]. To facilitate commitment, the initial meeting was longer, involved more team building activities and transitioned from an investigator to peer-led format. The structure of the monthly meetings was designed to be ritualized, peer-led, and guided by an easy to follow, explicitly scripted team leader manual and corresponding workbooks.

The meetings were designed with four components. They begin with a 10-minute work-life check-in, where each participant writes two ratings on a white board, one for their work and one for their life, using a 1 = worst ever to 10 = best ever scale. The activity is part of the structure developed for the Ignatian Faculty Forum [33,34], where it is used to acknowledge the importance of each member and provide a context that supports the whole person. Individuals share a few sentences about their ranking in each category before proceeding with the education and social support activities. Rather than engage in discussion,

others are encouraged to acknowledge each person's ratings and events.

Modeled on our prior scripted team-based programs [35,36], the meetings are led by one of the HCWs in the group. Team leaders were recruited based on their interest during enrollment. Prior to the first team meeting, they participated in a 3-hour team leader training, where they received additional project background and practiced with the scripted format. Examples of the scripted COMPASS lesson plans are presented in Figure 2.

We particularly wanted to avoid a hierarchical pedagogic structure of "teaching to" HCWs. Peer-led programs have documented efficacy and may be as effective as professionally delivered formats [37,38]. Peers also reduce expense, promote a sense of shared norms, enhance social support, and augment material with credible examples and personal experiences [39-41]. A downside of peer leaders is the need to recruit and train them. However, we have a history of successfully using

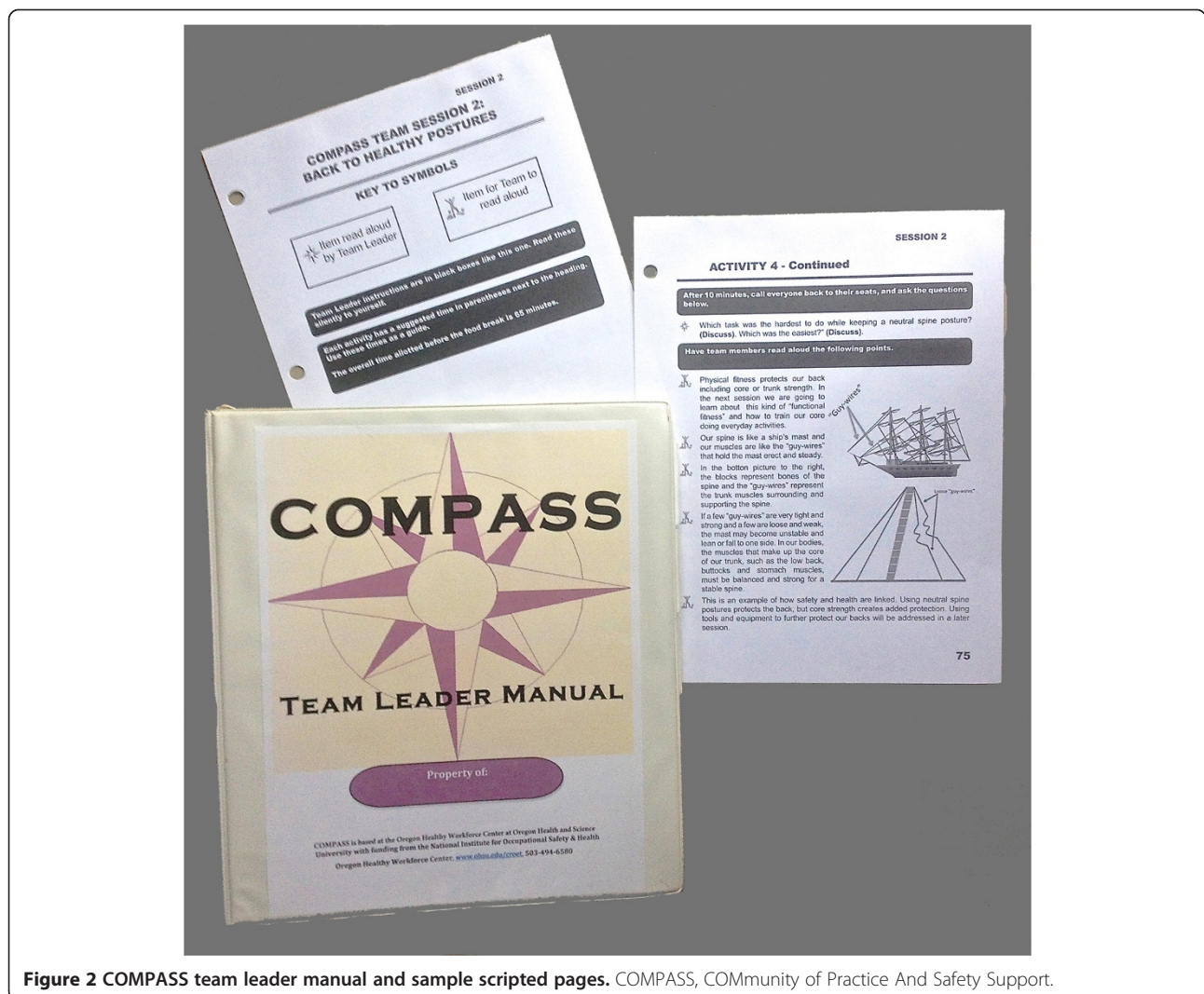


Figure 2 COMPASS team leader manual and sample scripted pages. COMPASS, COMMunity of Practice And Safety Support.



scripted peer-led interventions, a format that minimizes training [35,36].

Following the work-life check-in, the second component is an educational “lesson” with interactive activities to increase knowledge and practice skills related to health protection and promotion. For example, participants might learn what constitutes a serving size of fruit and vegetables, practice using simple ergonomic tools, or review a mnemonic for communication skills and role play its use. Meetings are once a month for six months. A listing of the TWH topics and activities in the six monthly meeting lessons is presented in Table 1.

We structured each lesson to end with verbalized selection and commitment to individual and team goals (Table 1). Follow-up would take place at the next month's lesson, where HCWs disclose progress and assess whether the team achieved their shared goal. In addition to building in social disclosure and reinforcing feedback [42-44], we planned team incentives to augment mutual accountability. For example, achieving 80% of team goals would be recognized with each team member receiving a COMPASS rain jacket at the end of the program.

Third, we provide a healthy meal, such as a vegetable soup and salad, at a break approximately halfway through the meeting, which is a time for members to socialize, while modeling healthy eating habits. The final meeting component is structured problem solving based on a successful process developed for family caregivers [45,46] and intended to share knowledge on topics not addressed in the scripted lessons. Problem solving begins during the meal with problem nomination, where each individual writes a few words on a white board to describe a current problem, issue, challenge, or opportunity and rates it from A (urgent) to F (lowest priority) [33,34]. The group selects one or two problems to address. During pilot testing, perhaps because of their occupational predisposition toward solving issues for their consumer-employers, workers tended to skip exploratory steps and jump straight into providing advice. Accordingly, we developed a worksheet to assist teams in following the steps of exploratory brainstorming and allowing the individual with the problem to select his/her own solution and action plan (Figure 3).

A review of studies indicated that social support from co-workers can have positive influences on affect, coping, absenteeism, job turnover and well-being [47]. In planning the meetings, roughly half the time was devoted to building social support, which is more than might be needed in a work structure that allows ongoing co-worker interactions. To further enhance HCWs sense of community and provide cues and tools for behavior change, intervention participants receive branded materials, such as a grocery bag, water bottle, and knee pads. The meeting closing includes a review of the session goals and a reflection on what each individual will remember from the session.

### **Design for dissemination and wave-two recruitment**

Existing TWH interventions were recently reviewed, and few have been used outside of their study setting [48]. We designed the COMPASS project to maximize dissemination potential, and data will go beyond participant behaviors and include indices of public health impact, such as economic outcomes [49].

Two dissemination strategies are planned, which will extend recruitment for the COMPASS trial. First, the Oregon Home Care Commission has existing paid training opportunities for HCWs. These 2- to 4-hour workshops are offered at various times and locations throughout the state. HCWs receive their hourly wage for attending each topic once per year. However, these largely didactic presentations lack follow-up on skill building and social support from bonded co-workers. To align with the pay for attending benefit, participants in COMPASS similarly are paid at the conclusion of each COMPASS session. If successful, the COMPASS curriculum could be inserted into the existing Home Care Commission offerings, with HCWs committing to a longitudinal sequence of COMPASS sessions. Investigators are working with the Oregon Home Care Commission to tailor the program to align with their format, with anticipated recruitment, using strategies similar to wave one but extended to other sites throughout Oregon, to begin later in 2014. Plans are to enroll four additional wave-two groups of Home Care Commission-COMPASS participants. Analysis plans for these groups are preliminary and await the initial wave findings. However, we anticipate comparing the process and outcome measures of wave one and two, and assessing the generality of a meditational model of effects developed with the original cohort.

Secondly, nationwide, the majority of HCWs are employed by private agencies [50]. Even in Oregon with its unique publicly funded model, approximately 40% of clients are served through a private agency. Study implementation methods will be collected and formatted into a manual of operation, all of which could be used within either public home care systems or private agency business structures. Discussions with private agencies and their local organizations are under way, and further plans for tailoring the program to specific agencies and implementing it within agencies await COMPASS trial outcomes.

## **Methods**

### **Overview and timeline**

The COMPASS trial is a cluster randomized controlled trial. Both intervention and the usual care control condition participants will complete health assessments and surveys prior to the intervention (month 0), at the end of intervention phase 1 (month 6) and at the end of intervention phase 2 (month 12). Additional funding is being sought for longitudinal assessments at 24 months.

**Table 1 Curriculum lessons, activities and individual and team goals**

Session activities	Individual and team goals
<p>Session 1: Fruits and vegetables</p> <ul style="list-style-type: none"> <li>• Barriers to eating fruits and vegetables</li> <li>• Serving size quiz</li> <li>• Nutrition jeopardy</li> </ul>	<ul style="list-style-type: none"> <li>• Individual goal: tracking eating at least five servings each day or substituting for a sugary beverage each day</li> <li>• Team goal: pedometer challenge (team divided into two squads)</li> </ul>
<p>Session 2: Back to healthy postures</p> <ul style="list-style-type: none"> <li>• Healthy spine (ship mast analogy)</li> <li>• Practice with partner finding neutral spine</li> <li>• Practice lifting postures</li> <li>• Tools to avoid back strain</li> </ul>	<ul style="list-style-type: none"> <li>• Individual goal: track neural spine position several times a day or attend relevant Oregon Home Care Commission (OHCC) class</li> <li>• Team goal: all do neutral spine task tracking</li> </ul>
<p>Session 3: Functional fitness</p> <ul style="list-style-type: none"> <li>• Core strengthen</li> <li>• Sitting posture</li> <li>• Practice do anywhere core exercises</li> <li>• ABLE (abdomen, back and leg exercises) stickers</li> <li>• Benefits of exercise quiz</li> </ul>	<ul style="list-style-type: none"> <li>• Individual goal: pair with teammate to exercise or core exercises everywhere tracking</li> <li>• Team goal: repeat pedometer challenge</li> </ul>
<p>Session 4: Take a load off with tools</p> <ul style="list-style-type: none"> <li>• Traps that lead to injuries</li> <li>• Common injuries and how they occur</li> <li>• Low tech tool show-and-tell and practice</li> <li>• On tools</li> </ul>	<ul style="list-style-type: none"> <li>• Individual goal: watch video or attend OHCC class on tools</li> <li>• Team goal: all assess hazards in consumer-employer's home</li> </ul>
<p>Session 5: Communicate for hazard correction</p> <ul style="list-style-type: none"> <li>• Role play communicating with consumer-employer</li> <li>• Learn PRAISE (Plan, Respect, Ask open-ended questions, I statements, Simply listen, Express understanding) mnemonic</li> <li>• Plan interaction</li> <li>• Role play interaction</li> </ul>	<ul style="list-style-type: none"> <li>• Individual goal: interview consume-employer about what makes good and bad days or use the PRAISE communication strategy with consumer-employer</li> <li>• Team goal: all talk with consumer-employer about hazard</li> </ul>
<p>Session 6: Mental health</p> <ul style="list-style-type: none"> <li>• Practice total body relaxation</li> <li>• Three blessing activities</li> <li>• Review of session topics and progress on goals</li> </ul>	<ul style="list-style-type: none"> <li>• Individual goal: choose relaxation or three blessing activity</li> <li>• Team goal: work on something from previous sessions</li> </ul>

**Participants: recruitment, randomization and retention**

Our dispersed HCW population required a variety of recruitment approaches. The Portland, Oregon, area has approximately 3,500 unionized HCWs, and to include a population from a different locale, recruitment was expanded to include Eugene, Oregon, which has another estimated 1,000 HCWs. We developed a recruitment flyer that briefly described the study and emphasized three free health screenings over the course of a year and monetary compensation at \$11 an hour (approximately the publicly-funded hourly rate at the time of study launch), with contact information for COMPASS staff. The flyers were distributed by research staff at existing Oregon Home

Care Commission training meetings. Lastly, a short recruitment advertisement was sent via email and postal mail with the Service Employees International Union (SEIU) Local 503's monthly newsletters.

Advertisements directed HCWs to call COMPASS staff, and an initial enrollment screening established eligibility and obtained verbal consent to participate. Inclusion criteria included working for at least one consumer-employer enrolled in a publicly funded program and their perceived ability to participate in a monthly meeting. We collected addresses, contact information, and preferred meeting times for use in clustering. If participants reported having substantial health concerns, such as heart-related issues,

### Action Planning Worksheet

**Follow up on last week's issue. Write down who had the issue, what it was, and check in with the person to see how things are going. Record the information in the table below.**

**Step 1: Follow-Up on Issue(s) from Last Time**

Team member with issue last time: \_\_\_\_\_

Description:
What did they do and how did it go?

**Check off the next three steps as they are completed: 1) Make sure everyone has written their issue and rating on the board, 2) Have the person/people with the highest rating review the issue he or she listed and 3) Select an issue or two to discuss this week. Take notes as you go.**

**Step 2: Issue Selection**

- Everyone write their own issue and rating on the board
- The person with the top rated issue describes it

If there is a tie in ratings, the tied people talk together to pick who gets help today.

- Person with top priority issue briefly reviews his/her challenge/opportunity

Team member with issue: \_\_\_\_\_

Description:
--------------

**Ask the group to brainstorm and take notes below (Step 3) while the co-leader writes ideas on the board. Then ask the person with the issue to pick the top 3 ideas, then write them down on the worksheet. Have the person with the issue discuss pros and cons of each during this step (Step 4).**

**Step 3: Brainstorm Ideas and Share Experiences**

--

**Ask the person with the issue to pick their favorite action ideas from the brainstorm list. He or she should write these on the worksheet while the co-leader stars these ideas on the board.**

**Step 4: Person with Issue Picks Favorite Action Ideas**

<b>Favorite Action Ideas</b>
1)
2)
3)

**Ask the person with the issue to get specific about their action plan, timeline, and what kind of follow-up they want. Fill in the table below with their answers.**

**Step 5: Make an Action Plan**

What is the action?	
When will it be done?	
What follow up is wanted?	

Figure 3 Problem solving worksheet.

they were required to obtain a note from their physician before enrolling.

Eligible participants who provided verbal consent were assigned to a group based upon zip code, preferred meeting time, and enrollment order. To simplify coordination, workers were asked for a preference between two meeting times, either Saturday morning or Tuesday evening. Thus, clustering was not based on recruitment from a pre-existing organization but a virtual unit based on geographic location and ability to meet at a specific time and location. Once two clusters were populated, using a coin toss randomization technique, an outside researcher randomly assigned one group to control and the other to the intervention conditions.

*A priori* power analyses specified an enrollment target of 8 groups of 10 participants per condition. The average attrition rate across prior intervention studies with family caregivers was 20% [25], so we conservatively estimated attrition at 25% for each testing time point when designing the target sample size. To motivate retention, we plan lottery style drawings for participants who complete each health assessment wave. We also will have retention bonus pay (double hourly wages) for time spent during assessments after baseline. When two groups were recruited, they were randomized (one intervention and one control).

Participants were informed of their condition assignment after their baseline data collection. All received the results of their health assessments, including a letter concerning desirable values, similar to that which might follow a typical visit to their health care provider.

**Control condition**

Control participants are free to participate at their own discretion in usual training classes offered by the Oregon Home Care Commission.

**Data collection**

Because there is no central "worksites", participants are asked to report after a 3-hour fast to the SEIU Local 503 union hall in Portland or Eugene. The study protocol and all its procedures have approval from the Institutional Review Board at Oregon Health & Science University, and the initial act when participants report for testing was and will be completing written informed consent. Following that, simple physiological measures are obtained, a survey completed and a brief interview (during the 6- and 12-month assessment).

**Quantitative**

The HCW survey includes demographic, work-health history items and a battery of outcome and potential

mediating measures. The survey emphasizes constructs with established reliability and validity. Behavioral items, unless otherwise noted, are anchored “in the past month.” Constructs and instruments used are presented in Table 2. The primary outcomes and purported mediators are indicated. Other variables are more distal outcomes, potential moderators of intervention effects or constructs added to align with other intervention trials being conducted at the Oregon Health Workforce Center of Excellence (<http://www.cdc.gov/niosh/twh/centers.html>).

The physiological assessment includes height, weight (Tanita scale; Model 310GS, Tanita Corporation of America, Inc., Arlington Heights, Illinois, USA) and blood pressure (OMRON Model HEM-907XL, Omron Healthcare, Inc., Lake Forest, Illinois, USA.). Fasting blood via routine finger sticks and capillary tube are analyzed for blood glucose, cholesterol, and triglyceride concentrations (Cholestech PA Analyzer, Hanson Medical Systems, Inc., Winter Park, Florida, USA). A 6-minute walk test is used as an index of fitness [74]. A body mechanics assessment is performed using tasks: 1) picking up a bag of groceries from the trunk of a car, 2) picking up a box from the floor, 3) picking up a pen from the floor, and 4) buttoning the shirt of a client. Task demonstrations are videotaped and still shots identified at participant contact with object. Measurements of participant trunk flexion in degrees are obtained using a goniometer and compared to published risk ranges [75].

The consumer-employers of intervention and control participants also will be surveyed with an instrument that includes demographic questions, observations about safety behaviors and ratings regarding satisfaction with their

HCW, using the 13-item Home Care Client Satisfaction Inventory [76]. Study participants deliver sealed survey packets to their consumer-employers that include information and the survey, as well as a pre-paid return addressed envelope.

#### Qualitative

Session observers take notes concerning the problem-solving topics discussed, items mentioned in reflections and other general observations. During the 6- and 12-month health assessments, semi-structured interviews will explore the process of attending sessions and behavior change. Open-ended questions will probe emergent themes, and those interviews are recorded for later transcription and analysis.

#### Fidelity and adherence

A research staff member observes each COMPASS session, and the scripted curriculum provides a check list of session components to index fidelity and dose. The observer also takes notes as part of qualitative data collection.

#### Power and sample size

Our wave one target sample was planned as 160 subjects (8 groups of 10 participants per condition), which is powered to detect changes in primary health promoting behavioral outcomes at the 6-month time point (0.85 power), based on effect sizes concerning specific eating behaviors (frequency of sugary drink and sugary snack consumption) from another population of lone workers [77] and an estimated intraclass correlation of 0.02 for health behaviors, based on a meta-analysis of intraclass

**Table 2 Survey constructs and origins**

Primary outcomes	Purported mediators	Other variables
Fruit and vegetable servings [51]	Community of practice scale [52]	Demographics; health, work and habits history
Sugary drinks, fats and snacks [53]	Social support [54]	Job strain [55]
Self-reported physical activity scale [35]	Team cohesion [56]	Work stress [57]
Safety compliance [58]		Sleep deficiency [53,59]
Self-reported tool use		Interpersonal conflict [60]
		Occupational Fatigue Inventory [61]
		Self-reported injury, workers' compensation claims
		Bodily pain/musculoskeletal complaints [62,63]
		Family work conflict [64]
		Family supportive supervisor behaviors [65]
		Positive and negative affect [66]
		Loneliness [67]
		Mood CES-D [68]
		Perceived stress [69]
		Stressful events [70,71]
		Life satisfaction [72,73]



correlations in studies of health behaviors [78]. The design also provides acceptable (but not exceptional) power to detect maintenance effects at the 12-month time point (0.74 power). Based on the original wave's eight intervention and eight control groups, the study should have moderate power (0.72) to detect mediated effects at the 6-month time point where both of the paths to and from the purported mediator exhibit medium effect sizes (that is,  $a = 0.3$  and  $b = 0.3$ ). The wave two mediational model will be compared with the wave one findings. While power will be limited given the smaller sample size of 40 participants (four groups) in the second translational wave, we will compare effect sizes in each pathway as they relate to the model of mechanisms developed with the original cohort.

#### Data analysis

##### Quantitative

In general analyses we will use SPSS (SPSS, Chicago, IL, USA) and M-Plus (Muthén and Muthén, Los Angeles, California, USA) for structural equation modeling. Survey instrument assessment will begin by confirming predicted item constructs, augmented with exploratory factor analysis, to establish reliable summary scales with maximum internal consistency.

Our primary hypothesis is that the intervention will be more effective than a usual treatment control condition for increasing safety and health behaviors. To test these hypotheses, we will evaluate between-group differences using an intent-to-treat approach and generalized estimating equations with participants nested in groups. We will begin by computing interaction contrasts on pre/post-intervention differences across groups. Intervention group membership will be the between-subjects factor, and pre/post-intervention assessment scores on primary outcomes will be the within-subjects factor. The interaction contrast approach will allow efficiently comparing the two groups on each dependent measure with a focused one degree of freedom hypothesis test; similar analyses will be repeated for the follow-up assessment time point.

We will also test for group differences in secondary outcomes, such as injuries and health measures. Discrete-scaled and rare secondary outcomes (for example, injuries) will be analyzed with Poisson or zero-inflated Poisson regression models. In models for discrete-scaled outcomes, we will use baseline values as a pre-treatment covariate to account for existing individual differences and boost statistical power to detect intervention effects.

Using mediation analysis to deconstruct the action and conceptual theory components has been a feature of our programs [79-81]. For continuous outcomes, structural equation modeling will be used to evaluate relations among variables using model-fit indices. For binary or ordinal outcomes, each mediator's contribution to predicting group

states for outcomes will be conducted using logistic regression analysis. Cross-sectional and longitudinal models will be developed to identify the strength of the relation of purported model constructs to outcome variables, and model-fit indices calculated. The multilevel capabilities of latent growth modeling make possible construction, estimation, and testing of a variety of complex models utilizing hierarchically structured data, such as ours. Each potential mediating variable will be evaluated in separate models, followed by multiple mediator models. Longitudinal mediation effects will be assessed in the latent growth modeling framework. These methods also allow for identification of subgroups for which the program has a differential effect. Variables coding these subgroups are moderator variables, and they usually are equivalent to interaction effects. Models with mediators and moderators allow simultaneous assessment of how a program works (mediation) and whether or not the program works differentially for certain participants (moderation). For example, a common result in prevention research is that effects vary according to pre-existing risk. This type of mediation modeling can provide information about subgroups experiencing large effects and others for which it is ineffective or even counter-productive.

For the initial randomized control trial wave, all participant data will be used, and group assignment will be represented by a dummy code variable (that is, intervention = 1, control = 0), using the pretest measures as predictors of the corresponding post-test outcomes and mediating variables, with the dummy code variable accounting for group differences at baseline. Once that mediation model is developed and we have completed the dissemination wave, we will assess and measure the magnitude of each pathway with data from participants who complete the adapted Home Care Commission-COMPASS program. While we do not expect that pathways in those latter analyses will be statistically significant, given the small sample size, we will compare effect sizes in each pathway as they relate to path effects in the original cohort.

We will determine the intervention's economic impact by measuring and computing intervention costs and contrasting them with estimated outcome-related savings. Our survey measures include potential cost saving outcomes, such as self-reported lost work time due to injuries and illnesses, absenteeism, and turnover intentions. We will also collect expanded economic-related data from agencies and organizations that "own" the data for our population of HCWs. We plan to work with the SEIU health care trusts to obtain health care cost data from health care providers for HCWs participating in the study. We will request these expanded workers compensation and health care cost data for participants in both arms of the study retrospectively (36 months prior to enrollment) and prospectively (12 months post-enrollment).

### **Qualitative**

Thematic content analysis will begin with reading interview transcripts and notes to identify patterns, commonalities, and idiosyncrasies. Barriers and enhancements to program impact will be sought within the dynamic contexts of actual experience. Construction of themes and interpretations [82-84], rather than bounding interpretation with a pre-specified list of categories for coding, avoids the substantive bias inherent in *a priori* categorization. Instead, we will use an adaption of the more inductive constant-comparative method [85,86]. Following identification of themes, the data set will be subjected to micro-review in a search for both confirming and disconfirming data. Quotations will be selected to exemplify and elaborate themes, to support findings, and to illuminate contexts, promoting reader understanding and facilitating generalization to other occupational settings. Gathering qualitative findings also will allow developing case studies [87]. We anticipate that these case studies may be useful when sharing findings with the Oregon Home Care Commission and others.

### **Ethical issues**

All study procedures were reviewed and approved by the Oregon Health & Sciences University Institutional Review Board (IRB00005473), with attention to informing potential participants that their enrollment will in no way affect their relationship with their union, consumer-employers, or Oregon Health & Sciences University. Institutional Review Board approval includes a data safety and monitoring plan, including the Principal Investigator's close monitoring and prompt reporting of any adverse events.

### **Discussion**

The COMPASS study is a cluster randomized controlled trial to improve the health and safety of HCWs. Its design is theory-based and structured to meet the needs of these low-wage, isolated workers. Mediation analysis will assist in confirming whether the program impacts purported mediating variables and validates its conceptual underpinnings. The program has several unique components. First, it is held away from the job as, unlike typical employees, HCWs lack a shared worksite. Second is the explicit attention to building a community of practice and providing social support for these lone workers. The scripted, peer-led format has worked in other settings [35,36], and for HCWs it may further enhance relevance and social support. In addition, having both individual and team level goals operating simultaneously may augment behavior change [31,32].

We recognized that HCWs have busy home lives, often also providing care for family members, and that they may change consumer-employers during the program, making attendance difficult. Sessions are being held at locations

and times to facilitate participation, and strategies are in place to minimize attrition. As with Oregon Home Care Commission classes, HCWs are paid for attending each session, and an escalating reimbursement structure accompanies data collection activities. In formatting manuals and workbooks, we needed a balance between a scripted format to maintain fidelity across groups and enough flexibility to build ownership and allow unscripted interactions that would enhance social support. We will observe all sessions, record adherence to the format, and document any deviations.

The lessons have a balance of safety and health promotion topics. Review of the literature identified only 17 published TWH programs that addressed both safety and health promotion in their intervention and assessment methods, and most lacked a balanced focus [48]. Simultaneously working on health protection and promotion may have advantages. Recent comparison of concurrent versus sequential behavior interventions indicates that addressing behaviors simultaneously is as effective and may be synergistic [88-90].

Some of the study's unique features also relate to its limitations. The unionization of Oregon HCWs provides a large population that can be configured in control and intervention groups for balanced randomization to study conditions. However, participants are from population centers and may not be representative of HCWs from more rural areas. Although the assessment measures are robust, in part to harmonize COMPASS with other studies of the Oregon Healthy Workforce Center for cross-project analyses, many are self-report, and our connections with intervention participants may lead to social desirability bias. In fact, the original description of altered behaviors because of being studied was among workers at the Western Electric Company's Hawthorne Plant [91,92]. However, although intuitively a potential factor, when examined, social desirability has minimal impact on intervention findings [93], and we will minimize any potential effect with attention to item wording, confidential survey completion and assessing those issues in the qualitative assessments.

The COMPASS study is designed to assess the efficacy of a TWH program for HCWs. Its strategy and methods demonstrates how a worker health protection and promotion intervention can be aligned with the unique needs of a particular worker group. If efficacy is established, a means for translation could allow enhancing the well-being of a growing workforce responsible for caring for frail and vulnerable members of the community.

### **Trial status**

Two pilot groups of HCWs informed the intervention meeting's structure and session content, using a just-in-time format. That is, observations and feedback from each pilot group session informed the curriculum development

for the next meeting. At the time of this manuscript submission, participants for an initial wave of the trial have been recruited and are engaged in the study protocol. Their baseline data is being assembled and cleaned; no baseline analyses have occurred. Wave two participant recruitment for the planned four HCW groups for the Home Care Commission-COMPASS program will begin late in 2014.

#### Abbreviations

COMPASS: COMMunity of Practice And Safety Support; HCW: home care worker; NIOSH: National Institute of Occupational Safety and Health; SEIU: Service Employees International Union; TWH: Total Worker Health™.

#### Competing interests

The authors declare that they have no competing interests.

#### Authors' contributions

RO is the principal investigator. RO, DE, JH, BW, RW and AB were the team that formulated the study intervention and piloted program components. ST and KL replaced RW and AB on the study team during participant recruitment. DE prepared the initial draft of this manuscript, and all authors added to the text, reviewed and approved the manuscript.

#### Acknowledgements

This research was supported with funding from the NIOSH as part of the Oregon Healthy Workforce Center (U19OH010154), a NIOSH Center of Excellence in Total Worker Health™. We are grateful to many members of our partner organizations, the SEIU Local 503 and the Oregon Home Care Commission, for their instrumental role in our research. Key supporting members from these organizations include Jerome Gryzbowski and Deborah Schwarz (SEIU), and Leslie Houston and Cheryl Miller (Oregon Home Care Commission).

#### Author details

<sup>1</sup>Oregon Institute of Occupational Health Sciences, Oregon Health & Science University, 3181 SW Sam Jackson Park Road, L606, Portland, OR 97239-3098, USA. <sup>2</sup>Department of Public Health & Preventive Medicine, Oregon Health & Science University, 3181 SW Sam Jackson Park Road, CB 669, Portland, OR 97239-3098, USA. <sup>3</sup>Department of Psychology, Portland State University, P.O. Box 751, Portland, OR 97207-0751, USA. <sup>4</sup>Division of Health Promotion & Sports Medicine, Oregon Health & Science University, 3181 SW Sam Jackson Park Road, L606, Portland, OR 97239-3098, USA. <sup>5</sup>Labor Education & Research Center, University of Oregon, 1675 Agate Street, Eugene, OR 97403-1289, USA. <sup>6</sup>Department of Psychology, Brigham Young University – Idaho, 525 South Center Street, Rexburg, ID 83460, USA.

Received: 24 June 2014 Accepted: 25 September 2014

Published: 27 October 2014

#### References

- Hymel PA, Loeppke RR, Baase CM, Burton WN, Hartenbaum NP, Hudson TW, McLellan RK, Mueller KL, Roberts MA, Yarborough CM, Konicki DL, Larson PW: **Workplace health protection and promotion: a new pathway for a healthier-and safer-workforce.** *J Occup Environ Med* 2011, **53**:695–702.
- Schill AL, Chosewood LC: **The NIOSH Total Worker Health™ program: an overview.** *J Occup Environ Med* 2013, **55**(12 Suppl):S8–S11.
- Bureau of Labor Statistics, U.S. Department of Labor: *Occupational Outlook Handbook*. 2014–2015th edition. Available at <http://www.bls.gov/oooh/>. Accessed May 2014.
- Hayashi R, Gibson J, Weatherley RA: **Working conditions in home care: a survey of Washington State's home care workers.** *Home Health Care Serv Q* 1994, **14**:37–48.
- Gershon RRM, Pogorselska M, Qureshi KA, Stone PW, Canton AN, Samar SM, Westra LJ, Damsky MR, Sherman M: **Home health care patients and safety hazards in the home: preliminary findings.** In *Advances in Patient Safety: New Directions and Alternative Approaches, Assessment*, AHRQ Publication No. 08-0034-1. 1st edition. Edited by Henricksen K, Battles JB, Keyes MA, Grady ML. Rockville, MD: Agency for Health Care Research and Quality; 2008.
- Kim I, Geiger-Brown J, Trinkoff A, Muntaner C: **Physically demanding workloads and the risks of musculoskeletal disorders in homecare workers in the USA.** *Health Soc Care Community* 2010, **18**:445–455.
- Wipfli B, Olson R, Wright RR, Garrigues L, Lees J: **Characterizing hazards and injuries among home care workers.** *Home Healthc Nurse* 2012, **30**:387–393.
- Olson R, Wipfli B, Wright RR, Garrigues L, Nguyen T, López de Castro B: **Reliability and validity of the home care STAT (Safety Task Assessment Tool).** *Appl Ergon* 2014, **45**:1157–1166.
- Galinsky T, Waters T, Malit B: **Overexertion injuries in home care workers and the need for ergonomics.** *Home Health Care Serv Q* 2001, **20**:57–73.
- Czuba LR, Sommerich CM, Lavender SA: **Ergonomic and safety factors in home health care: exploration and assessment of alternative interventions.** *Work* 2012, **42**:341–353.
- Franks P, Winters PC, Tancredi DJ, Fiscella KA: **Do changes in traditional coronary heart disease risk factors over time explain the association between socio-economic status and coronary heart disease?** *BMC Cardiovasc Disord* 2011, **11**:28.
- Hiller-Brown FC, Bamba CL, Cairns-Nagi JM, Kasim A, Moore HJ, Summerbell CD: **A systematic review of the effectiveness of individual, community and societal level interventions at reducing socioeconomic inequities in obesity amongst adults.** *Int J Obes* 2014, May 12 [Epub ahead of print].
- Kouvonen A, Kivimäki M, Oksanen T, Pentti J, De Vogli R, Virtanen M, Vahtera J: **Obesity and occupational injury: a prospective cohort study of 69,515 public sector employees.** *PLoS One* 2013, **16**:e77178.
- Frith H, Kitzinger C: **Emotion work as a participant resource: a feminist analysis of young women's talk-in-interaction.** *Sociology* 1998, **32**:299–320.
- Kim BH, Noh S, Muntaner C: **Emotional demands and the risks of depression among homecare workers in the USA.** *Int Arch Occup Environ Health* 2013, **86**:635–644.
- Service Employees International Union Local 503: **Overview of homecare collective bargaining.** In Available at <http://www.seiu503.org/2014/09/homecare-and-personal-support-workers-win-basic-federal-workers-protections/>. Accessed May 2014.
- Span P: **A better way to find home care aids.** In *The New York Times*. Available at <http://newoldage.blogs.nytimes.com/2011/05/04/a-better-way-to-find-home-care-aides/?module=Search&mabReward=relbias%3Ar>. Accessed May 12, 2014.
- Chen H-T: *Theory-Driven Evaluations*. Newbury Park, CA: Sage; 1990.
- MacKinnon DP: *Introduction to Statistical Mediation Analysis*. Mahwah, NJ: Erlbaum; 2007.
- Bandura A: *Social Foundations of Thought and Action*. Englewood Cliffs, NJ: Prentice Hall; 1986.
- Wood RE, Bandura A: **Social cognitive theory of organizational management.** *Acad Manage Rev* 1989, **14**:361–384.
- Skinner F: **Selection by consequences.** *Science* 1981, **213**:507–510.
- Sörensen S, Pinquart M, Duberstein P: **How effective are interventions with caregivers? An updated meta-analysis.** *Gerontologist* 2002, **42**:356–372.
- Bandura A: **Social cognitive theory of self-regulation.** *Org Behav Human Dis Proc* 1991, **50**:248–287.
- Laraway S, Snyderski S, Michael J, Poling A: **Motivating operations and terms to describe them: some further refinements.** *J Appl Behav Anal* 2003, **36**:407–414.
- Wenger E: *Communities of Practice: Learning, Meaning, and Identity*. Cambridge: Cambridge University Press; 1998.
- Wenger E, McDermott R, Snyder WM: *Cultivating Communities of Practice*. Boston, MA: Harvard Business School Press; 2002.
- Li LC, Grimshaw JM, Nielsen C, Judd M, Coyte PC, Graham ID: **Use of communities of practice in business and health care sectors: a systematic review.** *Implem Sci* 2009, **4**:27.
- Olson R, Winchester J: **Behavioral self-monitoring of safety and productivity in the workplace: a methodological primer and quantitative literature review.** *J Organ Behav Manage* 2008, **28**:9–75.
- Redmond BF: **Self-Efficacy Theory: Do I think that I can succeed in my work?** In *Work Attitudes and Motivation*. University Park, Pennsylvania: The Pennsylvania State University World Campus; 2010. Available at <https://wikispaces.psu.edu/display/PSYCH484/7.+Self-Efficacy+and+Social+Cognitive+Theories>. Accessed October 2014.
- Pearsall MJ, Christian MS, Ellis APJ: **Motivating interdependent teams: individual rewards, shared rewards, or something in between?** *J Appl Psychol* 2010, **95**:183–191.

32. Siemsen E, Balasubramanian S, Roth A: **Incentives induce task-related effort, helping, and knowledge sharing in work-groups.** *Manage Sci* 2007, **53**:1533–1550.
33. Delbecq J, DeSchraver MC: **The Ignatian faculty forum: a transformative faculty formation program.** *Connections* 2012, **12**:59.
34. Ignatian Center for Jesuit Education: *Ignatian Faculty Forum*; 2014. Available at [www.scu.edu/icspirituality/forum.cfm](http://www.scu.edu/icspirituality/forum.cfm). Accessed Feb 20, 2014.
35. Elliot DL, Goldberg L, Kuehl KS, Moe EL, Breger RKR, Pickering MA: **The PHLAME Study: process and outcomes of two models of behavior change.** *J Occup Environ Med* 2007, **49**:204–213.
36. Kuehl KS, Elliot DL, Goldberg L, MacKinnon DP, Vila BJ, Smith J, Miočević M, O'Rourke HP, Valente MJ, De Francesco C, Sleight A, McGinnis W: **The safety and health improvement: enhancing law enforcement departments study: feasibility and findings.** *Front Public Health* 2014, **2**:1–7.
37. Weibel AR, Okonsky J, Trompeta J, Hotzemer WL: **A systematic review of the effectiveness of peer-based interventions on health-related behaviors in adults.** *Am J Public Health* 2010, **100**:247–253.
38. Martin Ginis KA, Nigg CR, Smith AL: **Peer-delivered physical activity interventions\* an overlooked opportunity for physical activity promotion.** *Transl Behav Med* 2013, **3**:434–443.
39. Llen VL, Wilder DA: **Social comparison, self evaluation, and conformity to the group.** In *Social Comparison Processes: Theoretical and Empirical Perspectives*. Edited by Suls JM, Miller RL. New York, NY: Hemisphere; 1977:187–208.
40. Buller D, Buller MK, Larkey L, Sennott-Miller L, Taren D, Aickin M, Wentzel TM, Morrill C: **Implementing a 5-a-day peer health educator program for public sector labor and trades employees.** *Health Educ Behav* 2000, **27**:232.
41. Frankham J: **Peer education: unauthorized version.** *Br Educ Res J* 1998, **24**:179–193.
42. Lock EA, Latham GP: **Building a practically useful theory of goal setting and task motivation: a 35-year odyssey.** *Am Psychol* 2002, **57**:705–717.
43. Michie S, Abraham C, Whittington C, McAteer J, Gupta S: **Effective techniques in healthy eating and physical activity interventions: a meta-regression.** *Health Psychol* 2009, **28**:690–701.
44. Salancik G: **Commitment and the control of organizational behavior and belief.** In *New Directions in Organizational Behavior*. Edited by Staw BM, Salancik GR. Chicago, Illinois: St. Clair Press; 1977:1–54.
45. Toseland RW: **Long-term effectiveness of peer-led and professionally led support groups for caregivers.** *Soc Serv Rev* 1990, **64**:308–327.
46. Toseland RW, Rossiter CM, Labrecque MS: **The effectiveness of peer-led and professionally led groups to support family caregivers.** *Gerontologist* 1989, **29**:465–471.
47. Shirey MR: **Social support in the workplace: nurse leader implications.** *Nurs Econ* 2004, **22**:313–319.
48. Anger WK, Elliot DL, Bodner TE, Olson R, Rohlman DS, Truxillo D, Kuehl K, Montgomery D, Hammer L, Buck M: **Effectiveness of total worker health interventions.** *J Occup Health Psychol* 2014, In press.
49. Glasgow RE, Vogt TM, Boles SM: **Evaluating the public health impact of health promotion interventions: the RE-AIM framework.** *Am J Public Health* 1999, **89**:1322–1327.
50. IBISWorld: **Home care providers in the US: market research report.** In Available at <http://www.ibisworld.com/industry/default.aspx?indid=1579>. Accessed May 2014.
51. Thompson FE, Subar AF, Smith AF, Midthune D, Radimer KL, Kahle LL, Kipnis V: **Fruit and vegetable assessment: performance of 2 new short instruments and a food frequency questionnaire.** *J Am Diet Assoc* 2002, **102**:1764–1772.
52. Cadiz D, Sawyer JE, Griffith TL: **Developing and validating field measurement scales for absorptive capacity and experienced community of practice.** *Educ Psychol Meas* 2009, **69**:1035–1058.
53. Buxton OM, Quintilliani LM, Yang MH, Ebbeling CB, Stoddard AM, Pereira LK, Sorensen G: **Association of sleep adequacy with more healthful food choices and positive workplace experiences among motor freight workers.** *Am J Public Health* 2009, **99**:S636–S643.
54. Sallis JF, Grossman RM, Pinski RB, Patterson TL, Nader PR: **The development of scales to measure social support for diet and exercise behaviors.** *Prev Med* 1987, **16**:825–836.
55. Karasek R, Brisson C, Kawakami N, Houtman ILD, Bongers PM, Amick B: **The job content questionnaire (JCQ): an instrument for internationally comparative assessments of psychosocial job characteristics.** *J Occup Health Psychol* 1998, **3**:322–355.
56. Chin WW, Salisbury WD, Pearson AW, Stollak MJ: **Perceived cohesion in small groups adapting and testing the perceived cohesion scale in a small-group setting.** *Small Gr Res* 1999, **30**:751–766.
57. Stanton JM, Balzer WK, Smith PC, Parra LF, Ironson G: **A general measure of work stress: the stress in general scale.** *Educ Psychol Meas* 2001, **61**:866–888.
58. Griffin MA, Neal A: **Perceptions of safety at work: a framework for linking safety climate to safety performance, knowledge and motivation.** *J Occup Health Psychol* 2000, **5**:347–358.
59. Buysse DJ, Reynolds CF, Monk TH, Berman SR, Kupfer DJ: **The Pittsburgh Sleep Quality Index (PSQI): a new instrument for psychiatric research and practice.** *Psych Res* 1989, **28**:193–213.
60. Wright RR, Mohr CD, Sinclair RR: **Conflict on the treatment floor: an investigation of interpersonal conflict experienced by nurses.** *J Res Nurs* 2014, **19**:26–37.
61. Åhsberg E: **Dimensions of fatigue in different working populations.** *Scand J Psychol* 2000, **41**:231–241.
62. Kuorinka I, Jonsson B, Kilbom A, Vinterberg H, Biering-Sørensen F, Andersson G, Jørgensen K: **Standardized Nordic questionnaires for the analysis of musculoskeletal symptoms.** *Appl Ergon* 1987, **18**:233–237.
63. Dennerlein JT, Hopcia K, Sembajwe G, Kenwood C, Stoddard AM, Tveito TH, Hashimoto DM, Sorensen G: **Ergonomic practices within patient care units are associated with musculoskeletal pain and limitations.** *Am J Ind Med* 2012, **55**:107–116.
64. Netemeyer RG, Boles JS, McMurrian R: **Developmental and validation of work-family conflict and family work conflict scales.** *J Appl Psychol* 1996, **81**:400–410.
65. Hammer LB, Ernst Kossek E, Bodner T, Crain T: **Measurement development and validation of the Family Supportive Supervisor Behavior Short-Form (FSSB-SF).** *J Occup Health Psychol* 2013, **18**:285–296.
66. Watson D, Clark LA, Tellegen A: **Development and validation of brief measures of positive and negative affect: the PANAS scales.** *J Pers Soc Psychol* 1988, **54**:1063–1070.
67. Hughes ME, Waite LJ, Hawkey LC, Cacioppo JT: **A short scale for measuring loneliness in large surveys results from two population-based studies.** *Res Aging* 2004, **26**:655–672.
68. Bohannon RW, Maljanian R, Goethe J: **Screening for depression in clinical practice: reliability and validity of a five-item subset of the CES-Depression.** *Percept Motor Skill* 2003, **97**:855–861.
69. Cohen S, Kamarck T, Mermelstein R: **A global measure of perceived stress.** *J Health Soc Behav* 1983, **24**:385–396.
70. Scully JA, Tosi H, Banning K: **Life events checklists: revisiting the social adjustment scale after 30 years.** *Educ Psychol Meas* 2000, **60**:864–876.
71. Hobson CJ, Kamen J, Szostek J, Nethercut CM, Tiedmann JW, Wojnarowicz S: **Stressful life events: a revision and update of the social readjustment scale.** *Int J Stress Manage* 1998, **5**:1–23.
72. Diener E, Emmons RA, Larsen RJ, Griffin S: **The satisfaction with life scale.** *J Pers Assess* 1985, **49**:71–75.
73. Ware JE, Kosinski M, Keller SD: **A 12-item short-form health survey: construction of scales and preliminary tests of reliability.** *Med Care* 1996, **34**:220–233.
74. American Thoracic Society: **Guidelines for the six-minute walk test: ATS committee on proficiency standards for clinical pulmonary function laboratories.** *Am J Respir Crit Care Med* 2002, **166**:111–117.
75. Hignett S, McAtamney L: **Rapid entire body assessment (REBA).** *Appl Ergon* 2000, **31**:201–205.
76. Westra BL, Cullen L, Brody D, Jump P, Geanon L, Milad E: **Development of the home care client satisfaction instrument.** *Public Health Nurs* 1995, **12**:393–399.
77. Olson R, Anger KW, Elliot DL, Wipfli B, Gray M: **A new health promotion model for lone workers: results of the SHIFT pilot study (Safety & Health Involvement for Truckers).** *J Occup Environ Med* 2009, **51**:1233–1246.
78. Admans G, Sulliford MC, Ukoumunne OC, Eldridge S, Chinn S, Campbell MJ: **Patterns of intra-cluster correlation from primary care research to inform study design and analysis.** *J Clin Epidemiol* 2004, **57**:785–794.
79. MacKinnon DP, Goldberg L, Clarke GN, Elliot DL, Cheong J, Lapin A, Moe EL, Krull JL: **Mediating mechanisms in a program to reduce intentions to use anabolic steroids and improve exercise self-efficacy and dietary behavior.** *Prev Sci* 2001, **2**:15–28.



80. Ranby KW, Aiken LS, MacKinnon DP, Elliot DL, Moe EL, McGinnis W, Goldberg L: **A Mediation analysis of the ATHENA intervention: reducing athletic-enhancing substance use and unhealthy weight loss behaviors.** *J Pediatr Psychol* 2009, **34**:1069–1083.
81. Ranby KW, MacKinnon DP, Fairchild AJ, Elliot DL, Kuehl KS, Goldberg L: **The PHLAME (Promoting Healthy Lifestyles: Alternative Models' Effects) firefighter study: testing mediating mechanisms.** *J Occup Health Psychol* 2011, **16**:501–513.
82. Lincoln YS, Guba EG: *Naturalistic Inquiry*. Newbury Park, CA: Sage; 1985.
83. Mabry L: **In living color: qualitative methods in educational evaluation.** In *International Handbook of Educational Evaluation*. Edited by Kellaghan T, Stufflebeam DL. Boston: Kluwer-Nijhoff; 2003:167–185.
84. Mabry L: **Qualitative evaluation methods.** In *Conducting Evaluation in the Real World: Overcoming Budget, Time, and Data Constraints*. 2nd edition. Edited by Bamburger M, Rugh J, Mabry L. Newbury Park, CA: Sage; 2011:289–318.
85. Glaser BG, Strauss AI: *The Discovery of Grounded Theory*. Chicago, IL: Aldine; 1967.
86. Strauss A, Corbin J: *Basics of Qualitative Research: Grounded Theory Procedures and Techniques*. Newbury Park, CA: Sage; 1990.
87. Yin RK: *Case Study Research Design and Methods*. 2nd edition. Thousand Oaks, CA: Sage; 1998.
88. King AC, Castro CM, Buman MP, Hekler EB, Urizar GG Jr, Ahn DK: **Behavioral impacts of sequentially versus simultaneously delivered dietary plus physical activity interventions: the CALM trial.** *Ann Behav Med* 2013, **46**:157–168.
89. Vandelanotte C: **Are simultaneously delivered health behavior change interventions the way of the future? A comment on King et al.** *Ann Behav Med* 2013, **46**:133–134.
90. Johnson SS, Paiva AL, Mauriello L, Prochaska JO, Redding C, Velicer WF: **Coaction in multiple behavior change interventions: consistency across multiple studies on weight management and obesity prevention.** *Health Psychol* 2014, **33**:475–480.
91. Franke RH, Kaul JD: **The Hawthorne experiments: first statistical interpretation.** *Am Sociol Rev* 1978, **43**:623–643.
92. Gillespie R: *Manufacturing Knowledge: a History of the Hawthorne Experiments*. Cambridge: Cambridge University Press; 1991.
93. Nolte S, Gerald R, Elsworth GR, Osborne RH: **Absence of social desirability bias in the evaluation of chronic disease self-management interventions.** *Health Qual Life Outcomes* 2013, **11**:114.

doi:10.1186/1745-6215-15-411

**Cite this article as:** Olson *et al.*: The COMMunity of Practice And Safety Support (COMPASS) total worker health™ study among home care workers: study protocol for a randomized controlled trial. *Trials* 2014 **15**:411.

**Submit your next manuscript to BioMed Central and take full advantage of:**

- Convenient online submission
- Thorough peer review
- No space constraints or color figure charges
- Immediate publication on acceptance
- Inclusion in PubMed, CAS, Scopus and Google Scholar
- Research which is freely available for redistribution

Submit your manuscript at  
[www.biomedcentral.com/submit](http://www.biomedcentral.com/submit)

